

Certificate of Analysis



Product description	20% Cold Pressed Hemp & Olive Oil
Batch number	TW050321HON
Manufacturing date	Feb 21
Expiry date	01 Mar 22
Analysis date	17 Mar 21
Test method	HPLC High Sensitivity (LOQ \leq 0.64ppm for all targets)
Storage	Ambient

Compound	Results (%)	Results (mg/30ml)	Results (mg/10ml)
Cannabidiol (CBD)	20.476	6142.682	2047.561
Cannabidiol (CBD)	20.476	6142.682	2047.561
Cannabidivarin (CBDV)	0.034	10.120	3.373
Cannabidiolic Acid (CBDA)	0.015	4.522	1.507
Cannabigerolic Acid (CBGA)	\leq LOQ	\leq LOQ	\leq LOQ
Cannabigerol (CBG)	\leq LOQ	\leq LOQ	\leq LOQ
Tetrahydrocannabivarin (THCV)	\leq LOQ	\leq LOQ	\leq LOQ
Cannabinol (CBN)	\leq LOQ	\leq LOQ	\leq LOQ
d9-Tetrahydrocannabinoid (d9-THC)	\leq LOQ	\leq LOQ	\leq LOQ
d8-Tetrahydrocannabinoid (d8-THC)	\leq LOQ	\leq LOQ	\leq LOQ
Cannabichromene (CBC)	\leq LOQ	\leq LOQ	\leq LOQ
Tetrahydrocannabinolic acid (THCA)	\leq LOQ	\leq LOQ	\leq LOQ
Total CBD (CBD+(CBDA x 0.877))	20.489	6146.648	2048.883
Total THC (THC+(THCA x 0.877))	\leqLOQ	\leqLOQ	\leqLOQ

Tested by:

Evelin Rauscher 17 MAR 21

Evelin Rauscher / QA Coordinator

Reviewed by:

M. Sookoo 17 Mar 21

Mattheus Sookoo / Production Manager

These are compliant under E/C Food supplement regulation which applies across the EU and in the UK. They also cover any guidance provided by EU or UK. As a food supplement we can verify that The Good Level LTD products do not fall under the Misuse of Drugs Act 1971 as no products contain any substances that are listed as controlled substances (including THC). All of the products test for non-detectable levels of THC which is verified by certificates of analysis.

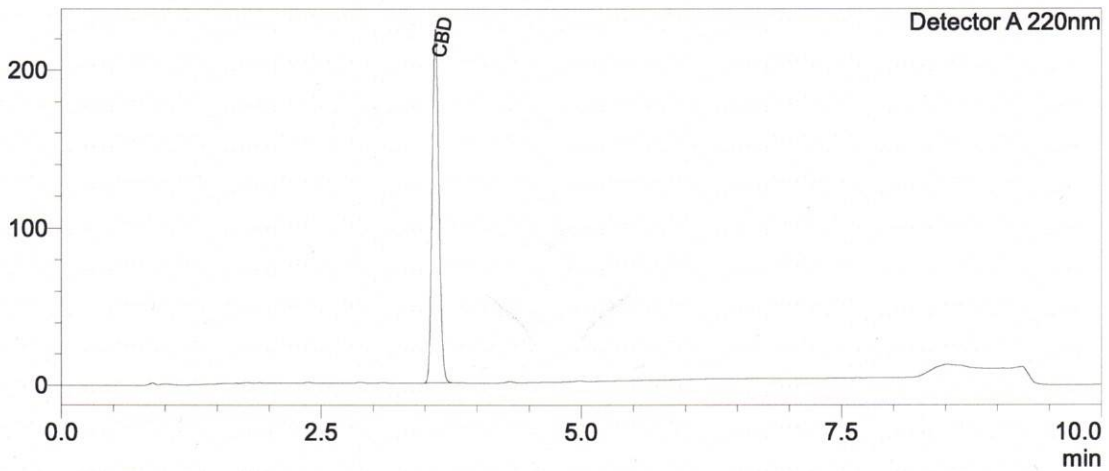


Sample Information

Sample Name : TW050321HON
 Sample ID : B
 Data Filename : Analysis_TW050321HON_B_003.lcd
 Method Filename : HighSensitivity Liquid Samples.lcm
 Batch Filename : Analysis20210317_162906-011.lcb
 Sample Type : Unknown
 Level : 1
 Dilution Factor : 4050
 Vial # : 1-48
 Injection Volume : 10 uL
 Date Acquired : 17/03/2021 16:37:17

Chromatogram

mV



Quantitative Results

Detector A

ID#	Name	Ret. Time	Area	Conc. ppm
1	CBDV	--	--	0.00
2	CBDA	--	--	0.00
3	CBGA	--	--	0.00
4	CBG	--	--	0.00
5	CBD	3.601	1021136	204756.06
6	THCV	--	--	0.00
7	CBN	--	--	0.00
8	d9-THC	--	--	0.00
9	d8-THC	--	--	0.00
10	CBC	--	--	0.00
11	THCA	--	--	0.00

Percentage and mg based on 10 mL bottle

Total THC	0.00	%
Total THC	0.00	mg
Total CBD	20.48	%
Total CBD	2047.56	mg

**Total THC
d9-THC and THCA combined**

**Total CBD
CBD and CBDA combined**

Reviewed MG 17 Mar 21

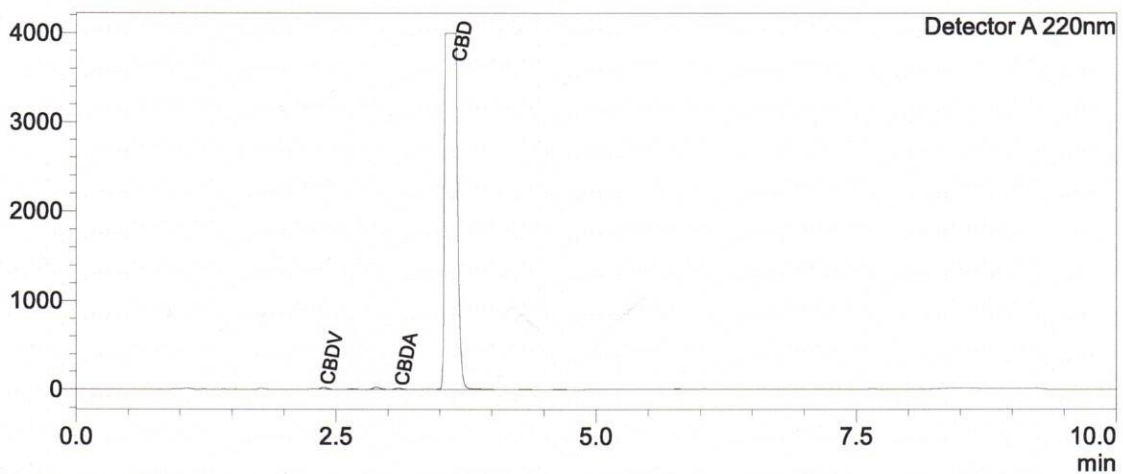


Sample Information

Sample Name : TW050321HON
 Sample ID : A
 Data Filename : Analysis_TW050321HON_A_003.lcd
 Method Filename : HighSensitivity Liquid Samples.lcm
 Batch Filename : Analysis20210317_162906-011.lcb
 Sample Type : Unknown
 Level : 1
 Dilution Factor : 81
 Vial # : 1-49
 Injection Volume : 10 uL
 Date Acquired : 17/03/2021 16:47:37

Chromatogram

mV



Quantitative Results

Detector A

ID#	Name	Ret. Time	Area	Conc. ppm
1	CBDV	2.383	89994	337.34
2	CBDA	3.099	55325	150.74
3	CBGA	--	--	0.00
4	CBG	--	--	0.00
5	CBD	3.648	33172262	133654.95
6	THCV	--	--	0.00
7	CBN	--	--	0.00
8	d9-THC	--	--	0.00
9	d8-THC	--	--	0.00
10	CBC	--	--	0.00
11	THCA	--	--	0.00

Percentage and mg based on 10 mL bottle

Total THC	0.00	%
Total THC	0.00	mg
Total CBD	13.38	%
Total CBD	1337.87	mg

**Total THC
d9-THC and THCA combined**

**Total CBD
CBD and CBDA combined**

Revised Mg 17 Mar 21