

Certificate of Analysis



Product description	5% Cold Press Hemp & Olive Oil
Batch number	FI050321HON
Manufacturing date	Feb 21
Expiry date	01 Mar 22
Analysis date	08 Mar 21
Test method	HPLC High Sensitivity (LOQ \leq 0.64ppm for all targets)
Storage	Ambient

Compound	Results (%)	Results (mg/30ml)	Results (mg/10ml)
Cannabidiarin (CBDV)	0.006	1.894	0.631
Cannabidiolic Acid (CBDA)	0.012	3.624	1.208
Cannabigerolic Acid (CBGA)	\leq LOQ	\leq LOQ	\leq LOQ
Cannabigerol (CBG)	\leq LOQ	\leq LOQ	\leq LOQ
Cannabidiol (CBD)	5.265	1579.351	526.450
Tetrahydrocannabivarin (THCV)	\leq LOQ	\leq LOQ	\leq LOQ
Cannabinol (CBN)	\leq LOQ	\leq LOQ	\leq LOQ
d9-Tetrahydrocannabinoid (d9-THC)	\leq LOQ	\leq LOQ	\leq LOQ
d8-Tetrahydrocannabinoid (d8-THC)	\leq LOQ	\leq LOQ	\leq LOQ
Cannabichromene (CBC)	\leq LOQ	\leq LOQ	\leq LOQ
Tetrahydrocannabinolic acid (THCA)	\leq LOQ	\leq LOQ	\leq LOQ
Total CBD (CBD+(CBDA x 0.877))	5.275	1582.529	527.509
Total THC (THC+(THCA x 0.877))	\leq LOQ	\leq LOQ	\leq LOQ

Tested by:

Evelin Rauscher 10 MAR 21

Evelin Rauscher / QA Coordinator

Reviewed by:

M. Sookoo 10 Mar 21

Matheus Sookoo / Production Manager

These are compliant under E/C Food supplement regulation which applies across the EU and in the UK. They also cover any guidance provided by EU or UK. As a food supplement we can verify that The Good Level LTD products do not fall under the Misuse of Drugs Act 1971 as no products contain any substances that are listed as controlled substances (including THC). All of the products test for non-detectable levels of THC which is verified by certificates of analysis.

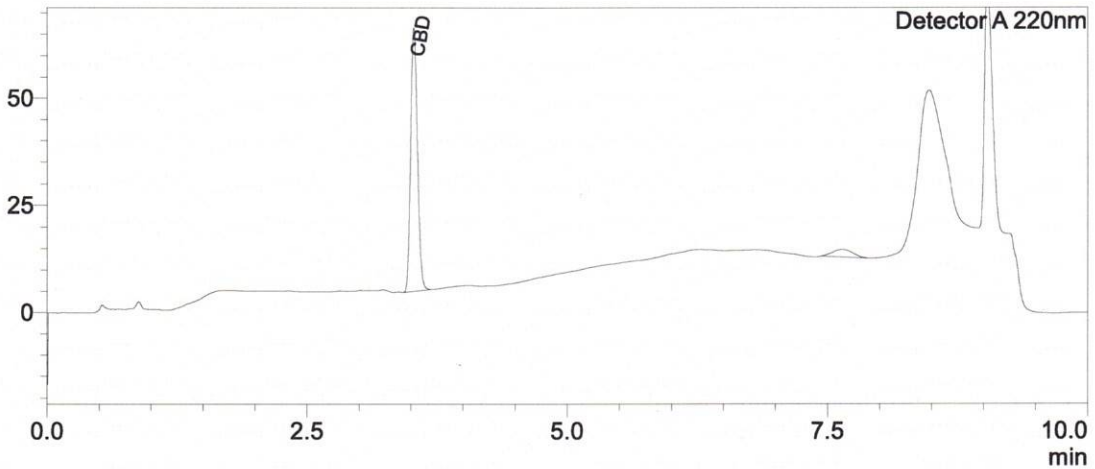


Sample Information

Sample Name : FI050321HON
 Sample ID : B
 Data Filename : Analysis_FI050321HON_B.lcd
 Method Filename : HighSensitivity Liquid Samples.lcm
 Batch Filename : Analysis20210308_151159-003.lcb
 Sample Type : Unknown
 Level : 1
 Dilution Factor : 4050
 Vial # : 1-19
 Injection Volume : 10 uL
 Date Acquired : 08/03/2021 15:12:25

Chromatogram

mV



Quantitative Results

Detector A

ID#	Name	Ret. Time	Area	Conc. ppm
1	CBDV	--	--	0.00
2	CBDA	--	--	0.00
3	CBGA	--	--	0.00
4	CBG	--	--	0.00
5	CBD	3.528	279388	52645.04
6	THCV	--	--	0.00
7	CBN	--	--	0.00
8	d9-THC	--	--	0.00
9	d8-THC	--	--	0.00
10	CBC	--	--	0.00
11	THCA	--	--	0.00

Percentage and mg based on 10 mL bottle

Total THC	0.00	%
Total THC	0.00	mg
Total CBD	5.26	%
Total CBD	526.45	mg

**Total THC
d9-THC and THCA combined**

**Total CBD
CBD and CBDA combined**

Reviewed Mg 08 Mar 21

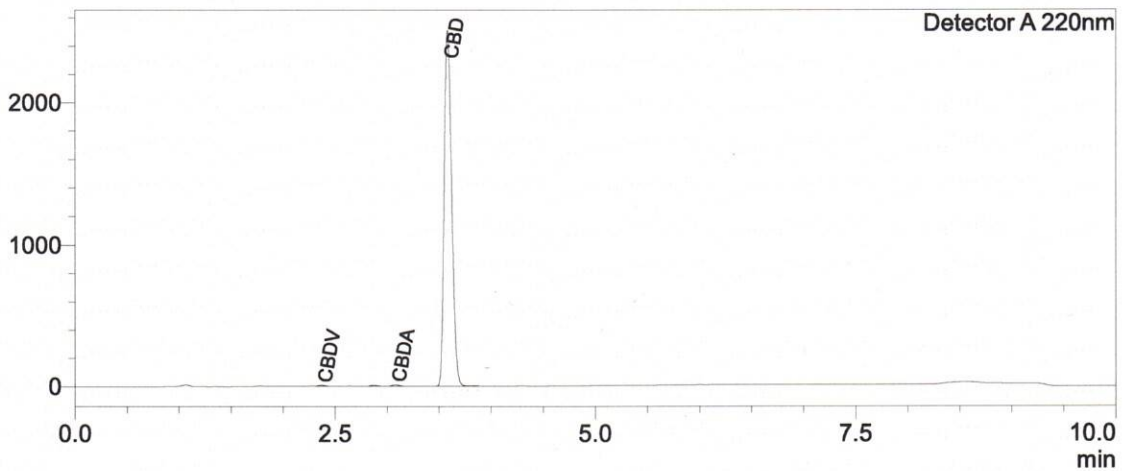


Sample Information

Sample Name : FI050321HON
 Sample ID : A
 Data Filename : Analysis_FI050321HON_A.lcd
 Method Filename : HighSensitivity Liquid Samples.lcm
 Batch Filename : Analysis20210308_151159-003.lcb
 Sample Type : Unknown
 Level : 1
 Dilution Factor : 81
 Vial # : 1-20
 Injection Volume : 10 uL
 Date Acquired : 08/03/2021 15:22:45

Chromatogram

mV



Quantitative Results

Detector A

ID#	Name	Ret. Time	Area	Conc. ppm
1	CBDV	2.370	21349	63.14
2	CBDA	3.079	45791	120.80
3	CBGA	--	--	0.00
4	CBG	--	--	0.00
5	CBD	3.583	12592971	47975.65
6	THCV	--	--	0.00
7	CBN	--	--	0.00
8	d9-THC	--	--	0.00
9	d8-THC	--	--	0.00
10	CBC	--	--	0.00
11	THCA	--	--	0.00

Percentage and mg based on 10 mL bottle

Total THC	0.00	%
Total THC	0.00	mg
Total CBD	4.81	%
Total CBD	480.82	mg

**Total THC
d9-THC and THCA combined**

**Total CBD
CBD and CBDA combined**

Reviewed MS 08 Mar 21