

Certificate of Analysis



Product description	10% Cold Press Hemp & Olive Oil
Batch number	TN050321HON
Manufacturing date	Feb 21
Expiry date	01 Mar 22
Analysis date	08 Mar 21
Test method	HPLC High Sensitivity (LOQ \leq 0.64ppm for all targets)
Storage	Ambient

Compound	Results (%)	Results (mg/30ml)	Results (mg/10ml)
Cannabidiarin (CBDV)	0.013	3.957	1.319
Cannabidiolic Acid (CBDA)	0.010	3.114	1.038
Cannabigerolic Acid (CBGA)	\leq LOQ	\leq LOQ	\leq LOQ
Cannabigerol (CBG)	\leq LOQ	\leq LOQ	\leq LOQ
Cannabidiol (CBD)	9.579	2873.727	957.909
Tetrahydrocannabivarin (THCV)	\leq LOQ	\leq LOQ	\leq LOQ
Cannabinol (CBN)	\leq LOQ	\leq LOQ	\leq LOQ
d9-Tetrahydrocannabinoid (d9-THC)	\leq LOQ	\leq LOQ	\leq LOQ
d8-Tetrahydrocannabinoid (d8-THC)	\leq LOQ	\leq LOQ	\leq LOQ
Cannabichromene (CBC)	\leq LOQ	\leq LOQ	\leq LOQ
Tetrahydrocannabinolic acid (THCA)	\leq LOQ	\leq LOQ	\leq LOQ
Total CBD (CBD+(CBDA x 0.877))	9.588	2876.458	958.819
Total THC (THC+(THCA x 0.877))	\leq LOQ	\leq LOQ	\leq LOQ

Tested by:

Evelin Rauscher 10Mar21

Evelin Rauscher / QA Coordinator

Reviewed by:

M. Sookoo 10Mar21

Mattheus Sookoo / Production Manager

These are compliant under E/C Food supplement regulation which applies across the EU and in the UK. They also cover any guidance provided by EU or UK. As a food supplement we can verify that The Good Level LTD products do not fall under the Misuse of Drugs Act 1971 as no products contain any substances that are listed as controlled substances (including THC). All of the products test for non-detectable levels of THC which is verified by certificates of analysis.

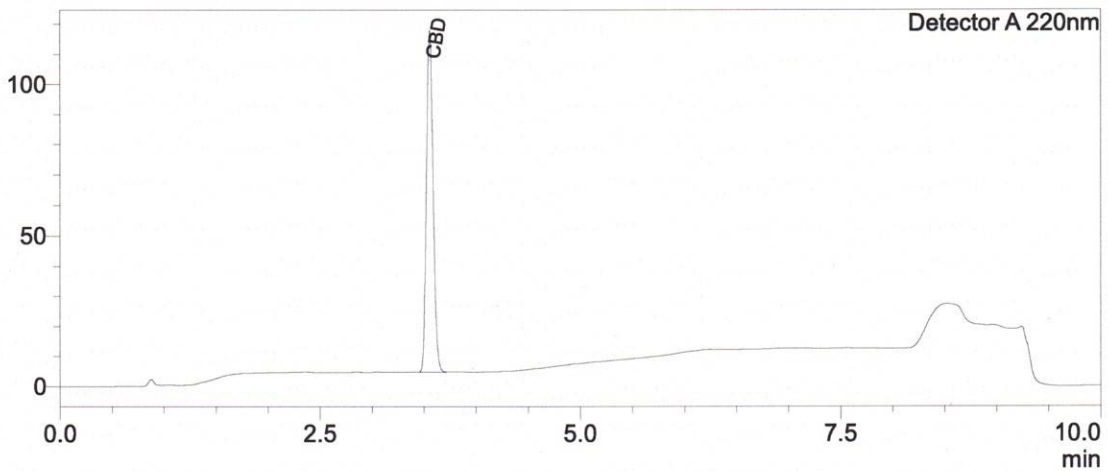


Sample Information

Sample Name : TN050321HON
 Sample ID : B
 Data Filename : Analysis_TN050321HON_B_001.lcd
 Method Filename : HighSensitivity Liquid Samples.lcm
 Batch Filename : Analysis20210308_155828-004.lcb
 Sample Type : Unknown
 Level : 1
 Dilution Factor : 4050
 Vial # : 1-28
 Injection Volume : 10 uL
 Date Acquired : 08/03/2021 16:14:31

Chromatogram

mV



Quantitative Results

Detector A

ID#	Name	Ret. Time	Area	Conc. ppm
1	CBDV	--	--	0.00
2	CBDA	--	--	0.00
3	CBGA	--	--	0.00
4	CBG	--	--	0.00
5	CBD	3.556	505837	95790.89
6	THCV	--	--	0.00
7	CBN	--	--	0.00
8	d9-THC	--	--	0.00
9	d8-THC	--	--	0.00
10	CBC	--	--	0.00
11	THCA	--	--	0.00

Percentage and mg based on 10 mL bottle

Total THC	0.00	%
Total THC	0.00	mg
Total CBD	9.58	%
Total CBD	957.91	mg

**Total THC
d9-THC and THCA combined**

**Total CBD
CBD and CBDA combined**

Reviewed MS 09 Mar 21

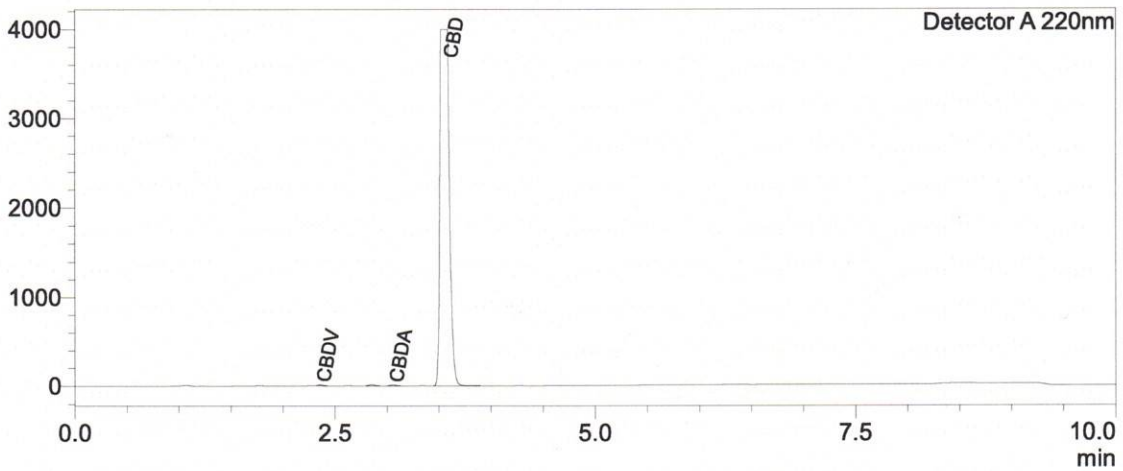


Sample Information

Sample Name : TN050321HON
 Sample ID : A
 Data Filename : Analysis_TN050321HON_A_001.lcd
 Method Filename : HighSensitivity Liquid Samples.lcm
 Batch Filename : Analysis20210308_155828-004.lcb
 Sample Type : Unknown
 Level : 1
 Dilution Factor : 81
 Vial # : 1-29
 Injection Volume : 10 uL
 Date Acquired : 08/03/2021 16:24:51

Chromatogram

mV



Quantitative Results

Detector A

ID#	Name	Ret. Time	Area	Conc. ppm
1	CBDV	2.359	40032	131.90
2	CBDA	3.057	40265	103.80
3	CBGA	--	--	0.00
4	CBG	--	--	0.00
5	CBD	3.582	25205357	96037.04
6	THCV	--	--	0.00
7	CBN	--	--	0.00
8	d9-THC	--	--	0.00
9	d8-THC	--	--	0.00
10	CBC	--	--	0.00
11	THCA	--	--	0.00

Percentage and mg based on 10 mL bottle

Total THC	0.00	%
Total THC	0.00	mg
Total CBD	9.61	%
Total CBD	961.28	mg

**Total THC
d9-THC and THCA combined**

**Total CBD
CBD and CBDA combined**

Revised mg 09 Mar 21